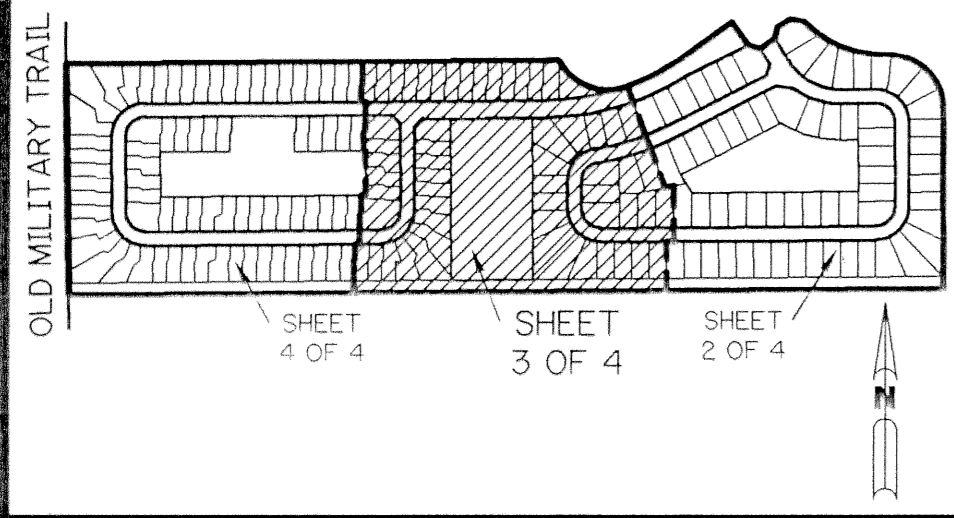


# NAUTICA P.U.D. - PLAT TWO

A PLANNED UNIT DEVELOPMENT

A PARCEL OF LAND LYING IN SECTION 13,  
TOWNSHIP 45 SOUTH, RANGE 42 EAST, CITY OF BOYNTON BEACH,  
PALM BEACH COUNTY, FLORIDA.

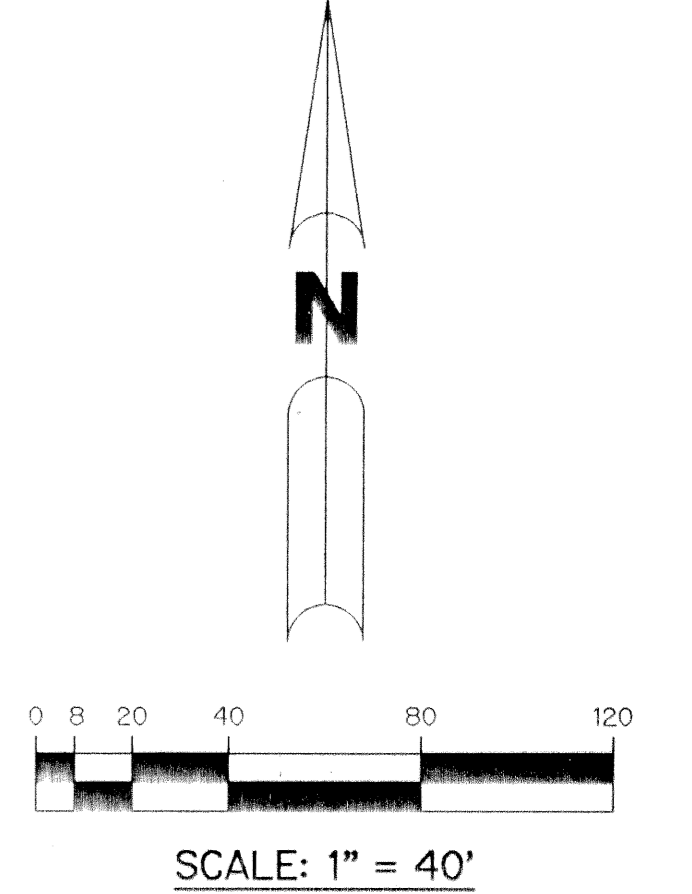
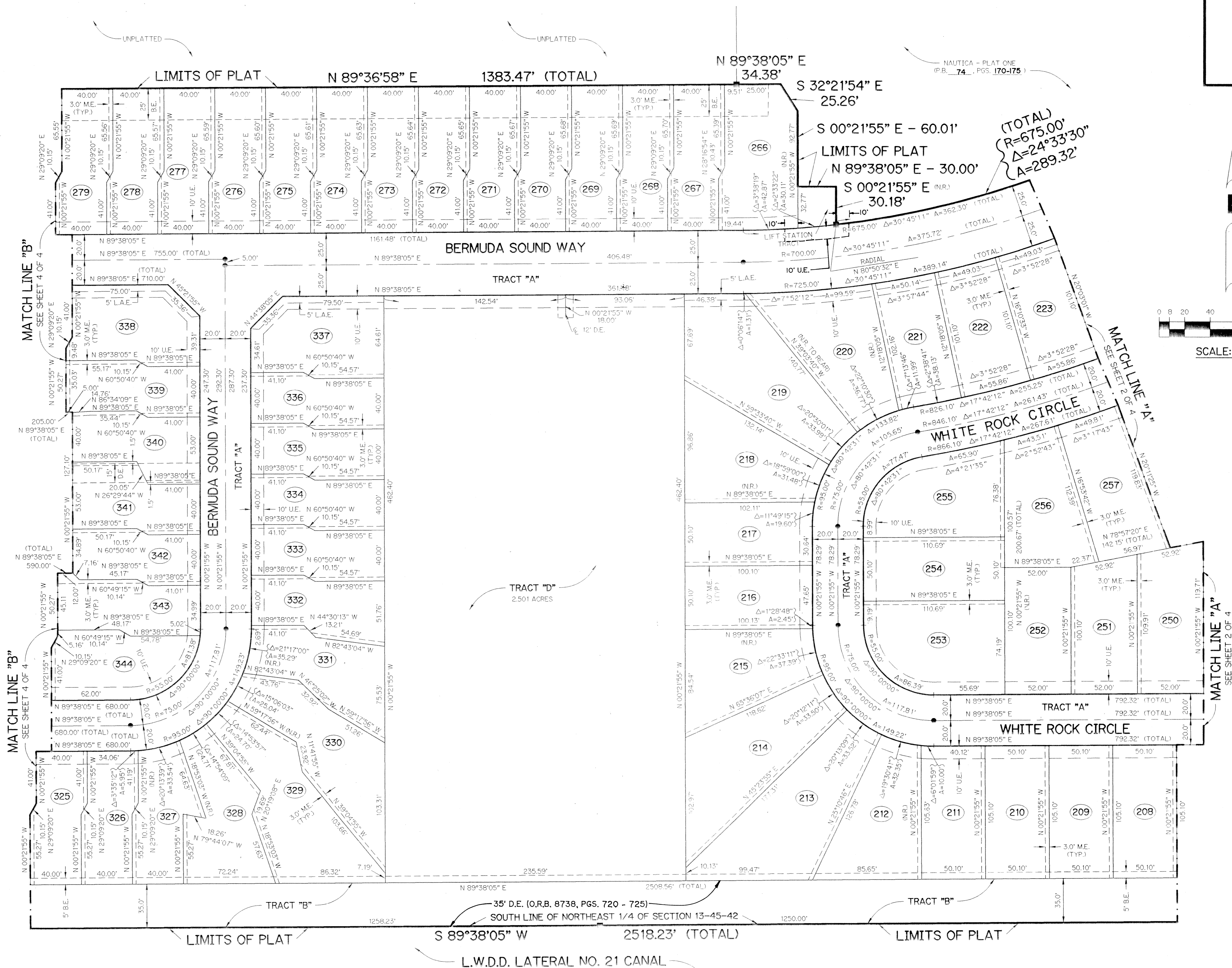
SHEET 3 OF 4      JANUARY, 1995



KEY MAP  
N.T.S.

**LEGEND:**

- - PERMANENT REFERENCE MONUMENT, PLS #4190
- - PERMANENT CONTROL POINT, PLS #4190
- △ - DELTA ANGLE
- A - ARC LENGTH
- BE - BUFFER EASEMENT
- D.E. - DRAINAGE EASEMENT
- L.A.E. - LIMITED ACCESS EASEMENT
- L.M.A.E. - LAKE MAINTENANCE ACCESS EASEMENT
- L.M.E. - LAKE MAINTENANCE EASEMENT
- L.W.D.D. - LAKE WORTH DRAINAGE DISTRICT
- M.E. - DRAINAGE, MAINTENANCE AND OVERHANG EASEMENT
- N.R. - NOT RADIAL
- N.T.S. - NOT TO SCALE
- O.R.B. - OFFICIAL RECORD BOOK
- P.B. - PLAT BOOK
- P.G.S. - PAGES
- P.L.S. - PROFESSIONAL LAND SURVEYOR
- R - RADIUS
- R/W - RIGHT-OF-WAY
- S.T. - SURVEY TIE
- U.E. - UTILITY EASEMENT



SUBDIVISION \* Nautica P.U.D. - Plat 2  
 BOOK 75      PAGE 35  
 FLOOD ZONE      ZONING  
 CE  
 PUD NAME      ZIP CODE  
 13/45/42      cl Boynton Bch

THIS INSTRUMENT PREPARED BY  
 WILBUR F. DIVINE, P.L.S. 4190, STATE OF FLORIDA  
 LAWSON, NOBLE AND ASSOCIATES, INC.  
 ENGINEERS PLANNERS SURVEYORS  
 WEST PALM BEACH, FLORIDA